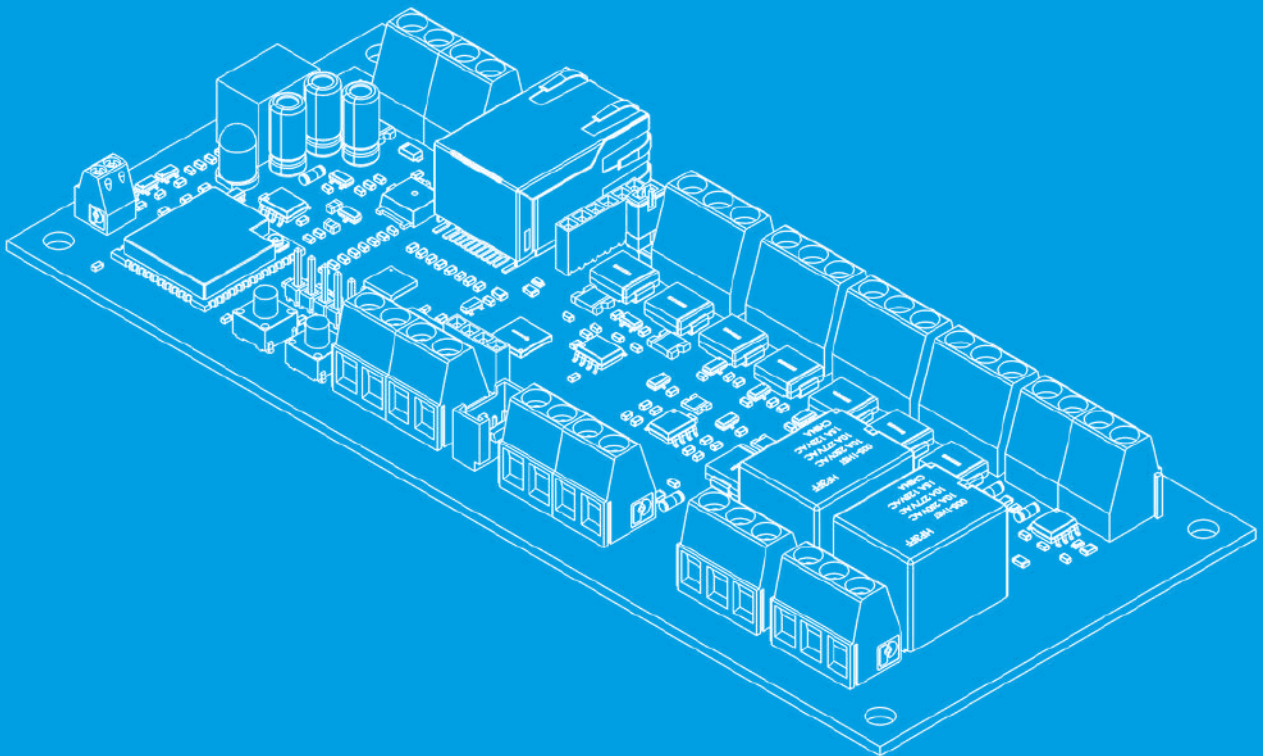


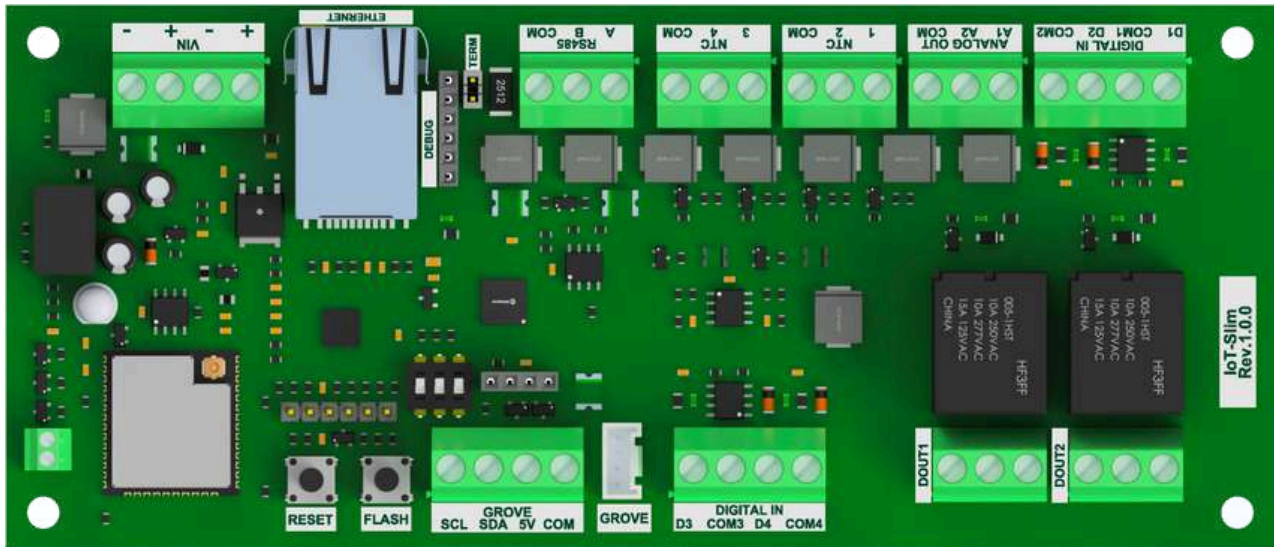


# Gateway IoT - Slim



**trackle**  
your iot formula

# Overview



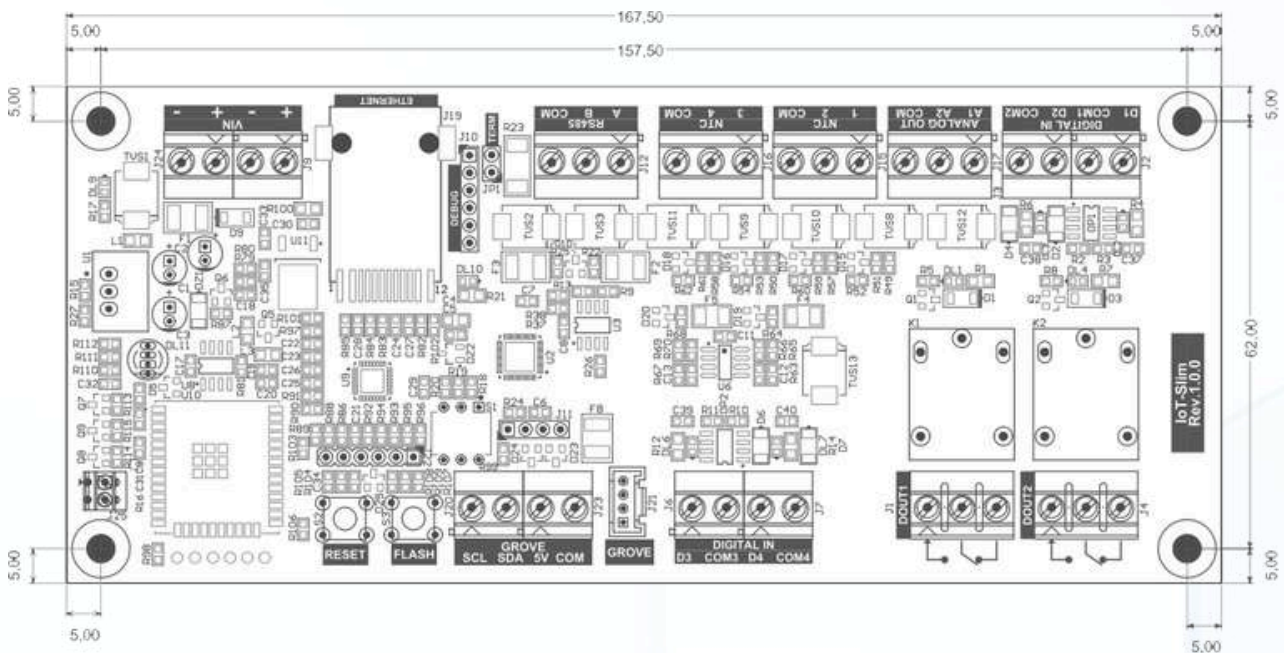
Unlock the power of IoT with IoT Slim, a cutting-edge device designed to meet your connectivity and automation needs. Packed with advanced features and built on a foundation of robust specifications, IoT Slim is your gateway to a smarter and more efficient future.

At the heart of IoT Slim lies the ESP32-WROOM-32E/UE CPU, ensuring lightning-fast data processing and seamless connectivity. With a minimum of 4MB Flash storage, IoT Slim offers plenty of room for data storage and firmware updates. You'll never run out of space to store your valuable information.

IoT Slim doesn't shy away from industrial applications. With 1x RS485 Half Duplex port that's ESD protected and supports Modbus RTU, it's your perfect choice for industrial automation and control systems.

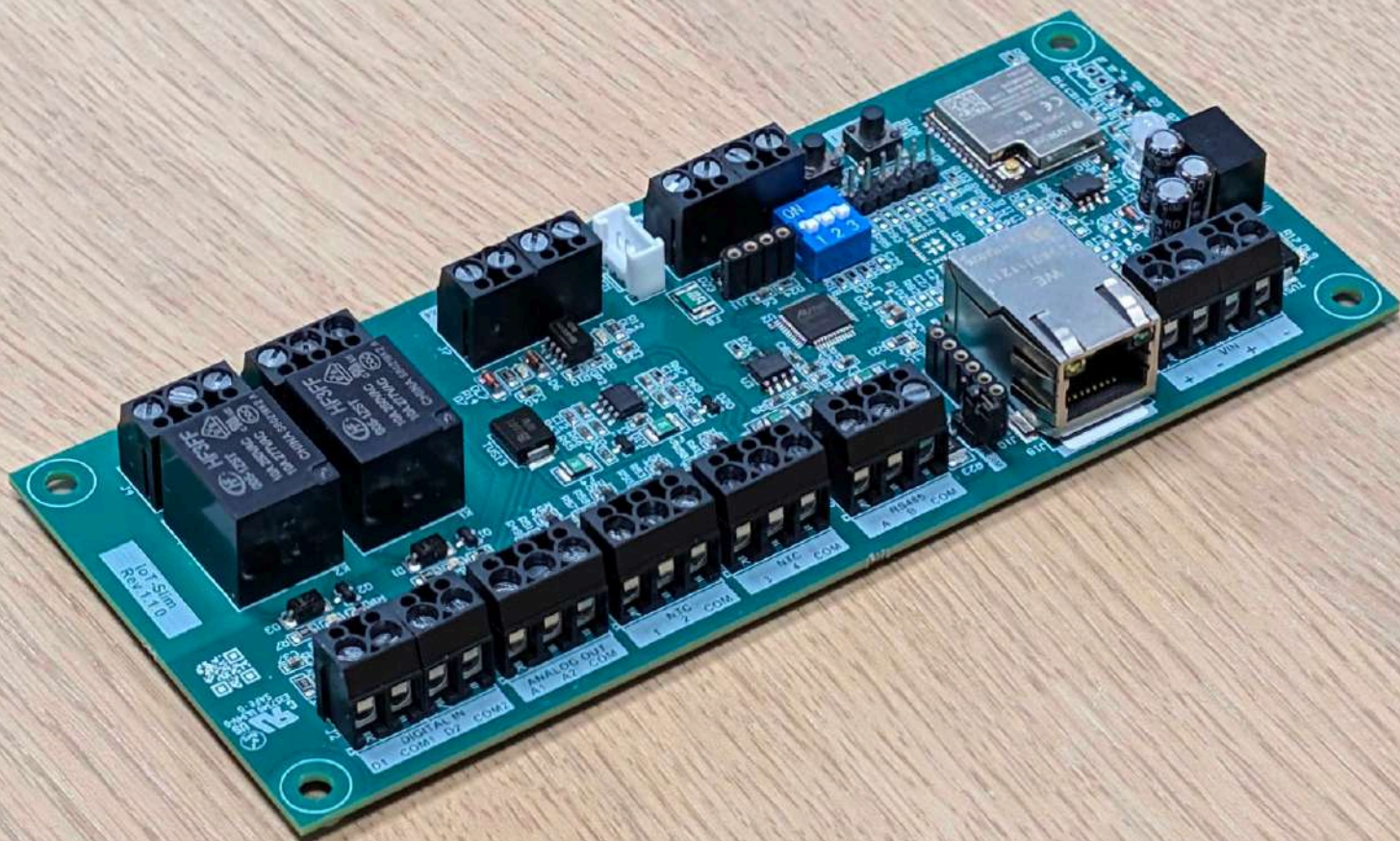
IoT Slim offers a wide range of digital and analog I/O options, a user-programmable button and an RGB LED for easy interaction and status indication, making it a breeze to operate and monitor.

# Physical specification



<b>CPU</b>	ESP32-WROOM-32E/UE
<b>Memory</b>	520KB SRAM
<b>Storage</b>	At least 4MB Flash
<b>Communication</b>	Wi-Fi 802.11b/g/n 2.4Ghz -- Bluetooth V4.2 BR/EDR, BLE -- Ethernet
<b>RS485</b>	1x RS485 Half Duplex ESD protected (Modbus RTU supported)
<b>Digital output</b>	2x relay 10A 240VAC
<b>Digital input</b>	4x optoisolated
<b>Analog output</b>	2x 0-10V
<b>NTC input</b>	4x NTC 10k
<b>Groove</b>	1x groove connector + 4 pin terminal block
<b>Button</b>	1x user-programmable button
<b>LED</b>	1x RGB
<b>Power supply</b>	12 to 30Vdc with Polarity Protection
<b>Size</b>	167.5 x 62 mm





**IOTREADY S.r.l.**

Via Artigiani, 2  
24060 Brusaporto (BG)

**+39 035 305 3414**  
**hello@iotready.it**