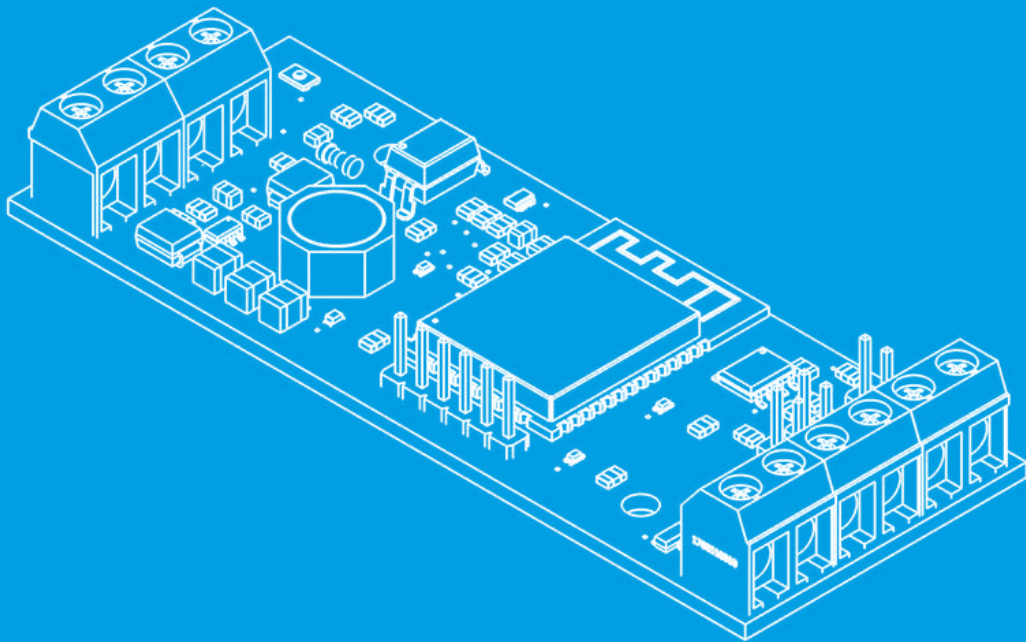


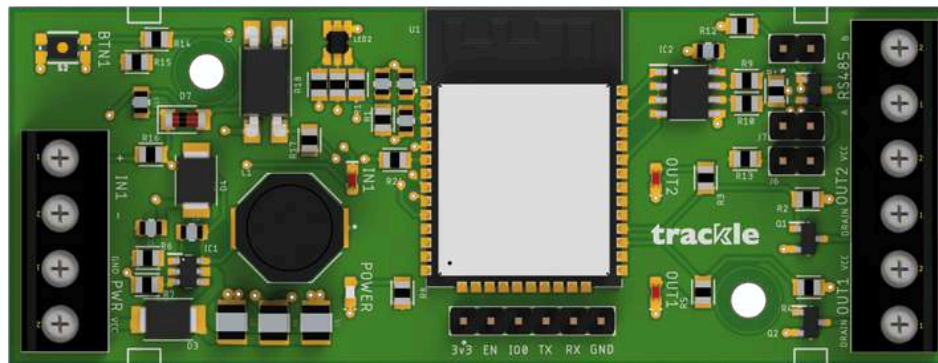


# Gateway IoT - Mini



**trackle**  
your iot formula

# Overview



The IoT Gateway Mini is a versatile device designed to complement the Trackle ecosystem.

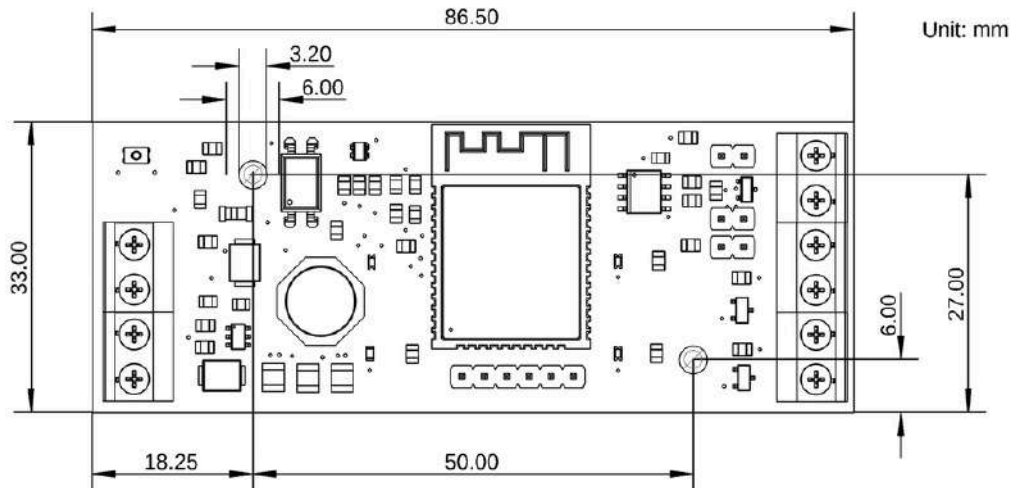
Powered by an ESP32 microcontroller, this gateway operates with a voltage range of 9 to 36 volts DC, making it suitable for various power sources. It features a vibrant RGB LED, offering visual feedback and status indicators.

Equipped with two open-drain outputs and an optoisolated input, the IoT Gateway Mini enhances your connectivity options. It also includes a programmable button, allowing for customizable control.

Designed for seamless integration, this gateway is compatible with the Candeboss CNMB/2/2 enclosure, ensuring a tidy and secure setup.

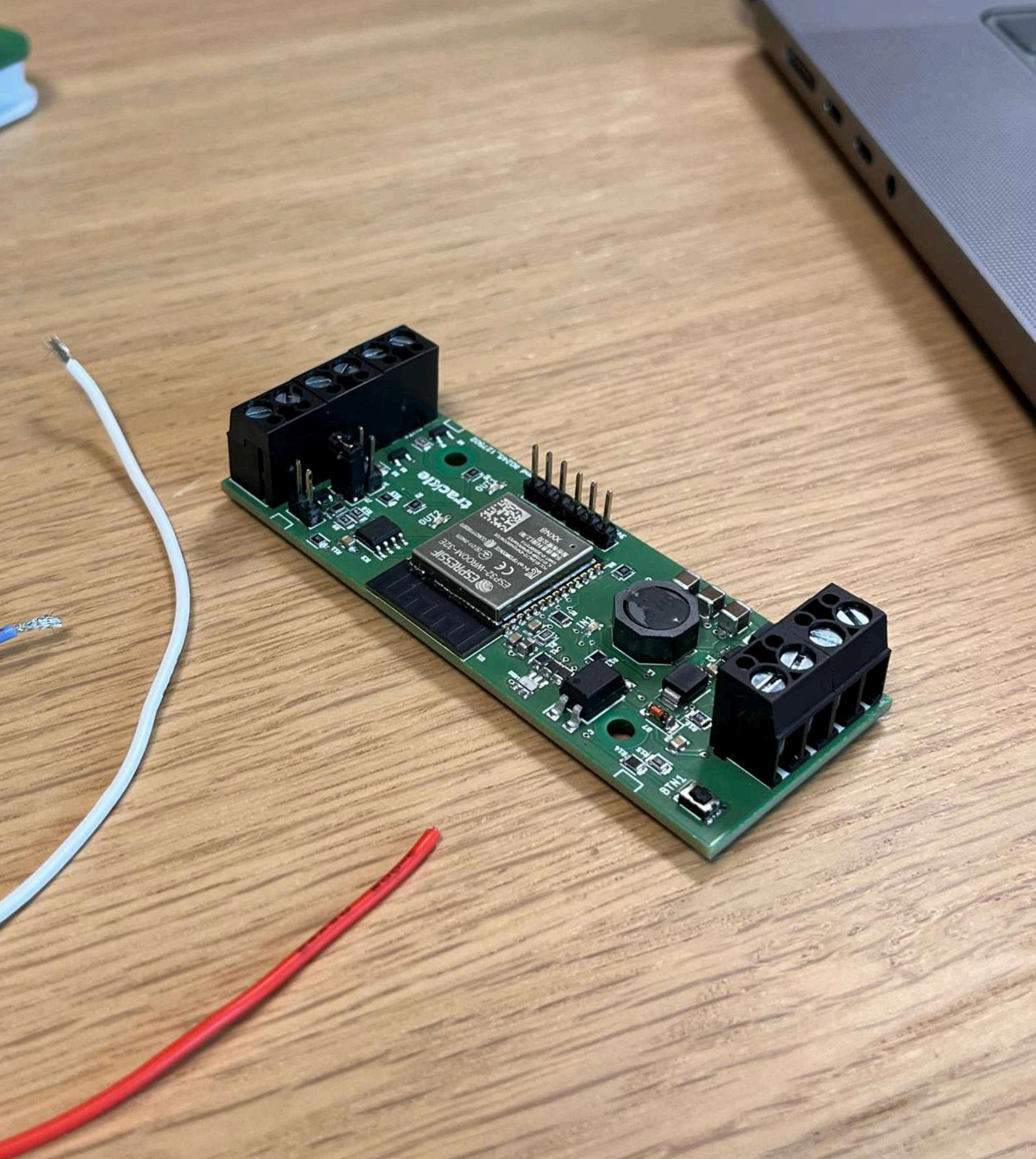
Out of the box, it comes preloaded with firmware that can be easily configured to read up to 300 Modbus registers, providing comprehensive data access.

# Physical specification



<b>CPU</b>	ESP32-WROOM-32E/UE
<b>Memory</b>	520KB SRAM
<b>Storage</b>	At least 4MB Flash
<b>Wi-Fi</b>	802.11b/g/n 2.4Ghz
<b>Bluetooth</b>	Bluetooth V4.2 BR/EDR, BLE
<b>RS485</b>	1x RS485 Half Duplex ESD protected (Modbus RTU supported)
<b>Digital input</b>	1x opto-isolated input ( $V_{max}=36V$ )
<b>Digital output</b>	2x open-drain outputs ( $I_{max}=1A$ )
<b>Button</b>	1x user-programmable button
<b>LED</b>	1x RGB
<b>Power supply</b>	9 to 36Vdc with Polarity Protection (5W recommended, excluding outputs load)
<b>Size</b>	33 x 86 mm
<b>Enclosure</b>	Candemoss DIN Rail Module CNMB/2/2





**IOTREADY S.r.l.**

Via Artigiani, 2  
24060 Brusaporto (BG)

**+39 035 305 3414**  
**hello@iotready.it**